



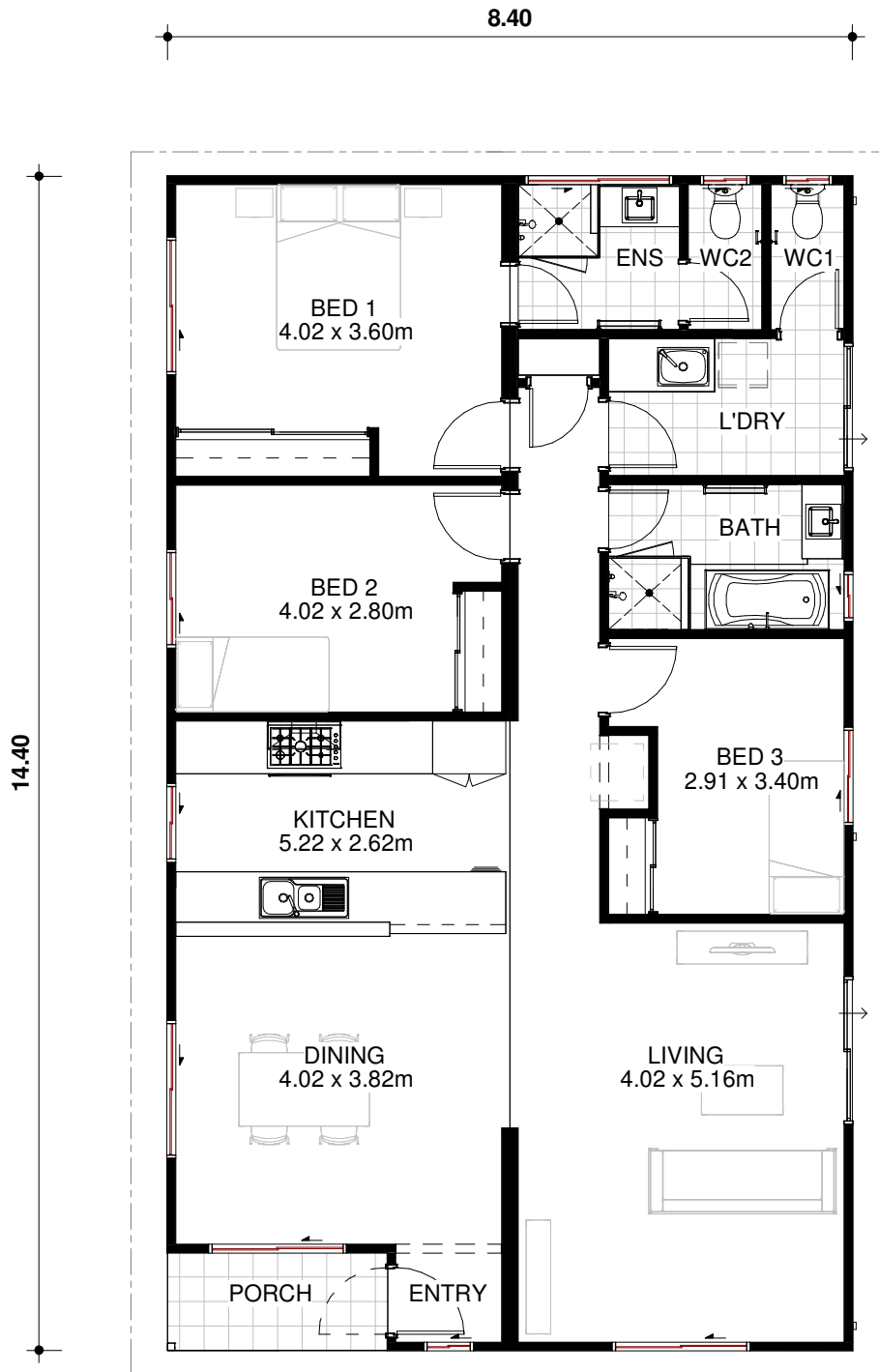
# HERDSMAN

3 bed 2 bath

MODULAR SERIES



t (08)6454 0919 e [sales@modularwa.com.au](mailto:sales@modularwa.com.au) w [modularwa.com.au](http://modularwa.com.au)



# HERDSMAN

3 bed 2 bath

Featuring a galley kitchen, expansive open plan living, and a separated bathroom layout, the Herdsman is a great, comfortable family home.

Dimensions  
8.4 x 14.4 m

Area  
121m<sup>2</sup>



t (08)6454 0919 e [sales@modularwa.com.au](mailto:sales@modularwa.com.au) w [modularwa.com.au](http://modularwa.com.au)

Graphics shown are for illustrative purposes only and may depict fixtures, finishes, and features not included in the standard model. Please refer to the Base Inclusions list for further information. Note: Dimensions shown on brochures may differ slightly to construction plans due to manufacturing measurement procedures and custom or site-specific conditions. © 2023, Modularis Pty Ltd BRN 101630.